

TROVET Intestinal Support, dietary supplement for the targeted tackling of intestinal problems in dogs and cats



*My dog or cat has intestinal problems...
what do I do now?*



Veterinary exclusive



reliable and affordable dietary pet food



Veterinary exclusive



Intestinal problems regularly occur in dogs and cats. Many underlying causes can be the cause of these problems. Intestinal problems can often be solved by removing the cause. Easily digestible food can help to relieve the digestive system. Sometimes extra support is required. A dietary supplement can then offer a solution.

This brochure gives you an introduction into the causes and treatment of intestinal problems and the role TROVET Intestinal Support | FBS can play in the treatment of the problems.

What you need to know?

Intestinal problems in dogs and cats.....	4
Factors that play a role in the development of intestinal problems	4
Treatment and role of a dietary supplement.....	6
TROVET Intestinal Support FBS.....	8



Intestinal problems in dogs and cats

Different causes can be the reason for intestinal disorders. A distinction can be made between acute and chronic problems. The most common acute intestinal problems are caused by food allergies, food intolerance, food poisoning and ingestion of harmful bacteria. Chronic intestinal problems are often caused by genetic abnormalities, long-term poor nutrition and diseases.

Factors that play a role in the development of intestinal problems

Intestinal flora

Many different species of good bacteria reside in the intestines. Nutrients that are not absorbed by the body of the dog or cat enter the colon. We call these prebiotics and are the main source of nutrition for bacteria residing in the intestines. The products that are released in this process, provide energy to the intestines and the pet with important vitamins and minerals. A healthy intestinal flora is also beneficial for the immune system. Bacteria in the intestines can also produce products that are harmful to the pet's health.

Long-term poor nutrition

The different bacterial species in the intestines must be in balance. Many bacterial species are specialised in processing one food source. Some bacterial species are good at processing protein, while others are better at carbohydrate or fat. With an appropriate balance, all undigested products in the intestines are optimally processed. With long-term poor nutrition, the balance can be disturbed. An intestinal flora that specialises in the processing of carbohydrates will produce toxic by-products if the dog or cat suddenly receives a protein-rich diet. These toxic by-products may cause intestinal problems.

Food poisoning

For self-protection, many bacteria, fungi and plants produce toxic substances. This prevents them from being eaten. An important step in the animal food preparation process is heating the product. Many of these toxins are inactivated by this heat treatment. However, some toxins can not be inactivated. Via foods that are not heated and foods rich in heat-resistant toxins, these substances can end up in the animal and cause food poisoning. Heavy metals can also be the cause of intestinal problems. To expel these toxins as quickly as possible and to limit damage, the body reacts with severe vomiting and diarrhoea.

Pathogenic bacteria

Due to reduced resistance, the immune system does not always succeed in eliminating pathogenic bacteria without any problems. In order to expel them from the body, the animal responds to this with diarrhoea and a possible inflammatory response.

Symptoms that can occur in animals with intestinal problems:

- > Vomiting
- > Diarrhoea/increased faecal volume
- > Flatulence and abdominal noises
- > Changing appetite
- > Stomach ache (arching back, not wanting to be touched)
- > Emaciation (despite a good appetite)
- > Listlessness

Treatment and role of a dietary supplement

The veterinarian will search for the cause of the intestinal problems. The type of treatment that is started, depends on the cause of the problem. A dietary supplement can often play a role in the treatment.

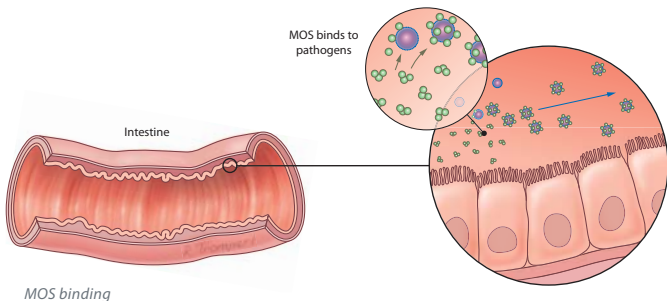
Fibres

Fibres can be divided into fermentable and non-fermentable fibres. Fermentable fibres function as an energy source for the intestinal flora. By providing fibres with different fermentation rates, energy is supplied to the bacteria in the beginning of the intestine as well as at the end of the intestine.

Non-fermentable fibres are not used by the body as an energy source and leave the body via the faeces. Nevertheless, non-fermentable fibres, such as psyllium, contribute to intestinal health. Psyllium fibres can help reduce diarrhoea by absorbing moisture in the intestines. This also results in a firmer stool and initiates intestinal motility, which eases defecation.

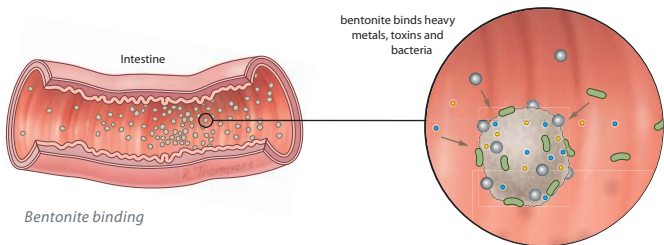
Immunoregulators

So-called immunoregulators help combat bad bacteria by supporting and activating the immune system. Examples of immunoregulators are manno-oligosaccharides (MOS) and beta glucans. Manno-oligosaccharides bind to pathogens, which results in the pathogens not being able to bind to the intestinal wall. The pathogens can then be expelled from the body via the faeces. Beta glucans stimulate the immune system and prevent it from becoming 'lazy'. This allows the immune system to react faster and more efficiently to pathogenic bacteria, viruses, fungi and parasites.



Bentonite

The best way to limit the damage caused by food poisoning is to eliminate the cause. During food poisoning, the body often reacts with vomiting and diarrhoea to expel toxins and heavy metals from the body, to limit damage. Bentonite is a substance that binds heavy metals, toxins and bacteria, which prevents them from being absorbed by the intestines and leave the body via the faeces.



TROVET Intestinal Support / FBS

Intestinal Support is a dietary supplement, formulated to support the intestines in a wide range of intestinal problems. Intestinal Support can be used in the treatment of an imbalance of intestinal microflora, bacterial intestinal infections and food poisoning. In addition, the supplement can be used as an additional fibre source for dry foods.



Characteristics of TROVET Intestinal Support | FBS:

- > Hypoallergenic dietary supplement, suitable to be combined with a hypoallergenic diet in case of food hypersensitivity.**
- > Fermentable fibres, called fructo-oligosaccharides (FOS), to stimulate the growth of 'good bacteria' in the intestine.**
- > Manno-oligosaccharides (MOS) for a positive effect on intestinal health.**
- > Beta glucans to stimulate the immune system.**
- > Bentonite to bind heavy metals, toxins and pathogenic bacteria.**
- > Psyllium to prevent the passage of excessive moisture through the intestinal tract and help prevent obstipation.**

TROVET Intestinal Support | FBS is a dietary supplement that, after consultation with your veterinarian, can be used for life. Intestinal Support is exclusively available via the veterinary practice. For more detailed product information, see www.trovet.com

TROVET Intestinal Support | FBS is available as powder in resealable jars of 150g and 400g.





Veterinary exclusive

reliable and affordable dietary pet food



TROVET

De Vergert 4 - 6681 LE Bommel - The Netherlands

T: +31 (0)481-470240 | E: info@trovet.nl | W: trovet.com