

TROVET Digestion Support, dietary supplement for the targeted tackling of pancreas problems in dogs and cats



*My dog or cat has pancreas problems...
what do I do now?*



Veterinary exclusive



reliable and affordable dietary pet food



Veterinary exclusive



The veterinarian has diagnosed pancreas problems in your dog or cat. Pancreas problems occur in dogs and cats of all ages and cause a lot of pain. Medication and nutrition play an important role in the treatment. Usually, an easily digestible, low-fat diet is prescribed. In some cases, this diet is sufficient to support animals with pancreatic disorders. However, it is often essential to supplement the diet with pancreatic enzymes, to relieve the pancreas and to prevent maldigestion.

This brochure gives you an introduction of the causes and treatment of pancreas problems and the role TROVET Digestion Support | PES can play in the treatment.

Wat do you need to know?

Pancreas problems.....4

Treatment and the role of a dietary supplement 9

TROVET Digestion Support | PES..... 10

In digestion we distinguish between so-called mechanical and chemical digestion. In the mouth, food is chewed by chewing movements. This is called mechanical digestion. The oesophagus transports food to the stomach, after which the food enters the duodenum. The pancreas produces amylase, lipase and proteases. In the duodenum, these enzymes become active and ensure the chemical digestion of carbohydrates, fats and proteins.

Pancreas problems

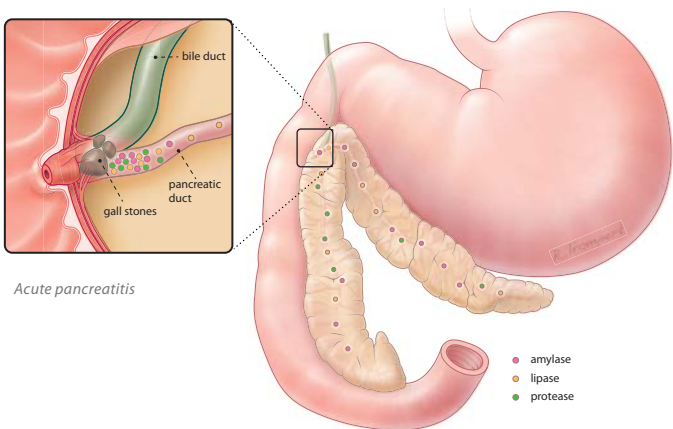
The pancreas is an indispensable organ in food digestion, due to the production and release of digestive enzymes. Without the action of amylase, lipase and proteases, carbohydrates, fats and proteins are too large to be absorbed by the intestinal wall. The nutrients can not be absorbed and used by the body, but end up the large intestine. This can lead to diarrhoea and weight loss. In pancreatic problems, insufficient enzymes reach the duodenum or the production of enzymes is too low.

Pancreatitis

Digestive enzymes are transported to the duodenum via the pancreatic duct. Normally, the enzymes are activated in the duodenum. If the enzymes can not reach the duodenum, food can not be digested properly. Symptoms are abnormal stools and weight loss, when the problem continues for a longer period. If the concentration of digestive enzymes is too high, because they can not reach the duodenum, they can still be activated. Enzymes that flow back, can damage the pancreatic tissue. This causes pancreas inflammation or in other words pancreatitis.

Acute pancreatitis

The main cause of acute pancreatitis is a blockage of the pancreatic duct. These obstructions are often caused by gallstones. These gallstones should be removed as soon as possible.

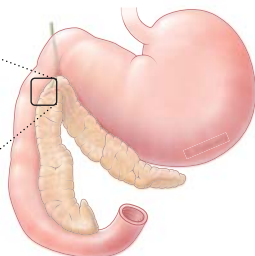
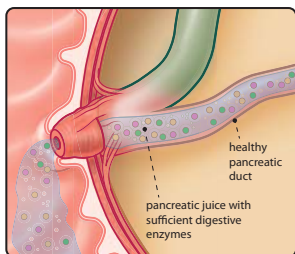


Chronic pancreatitis

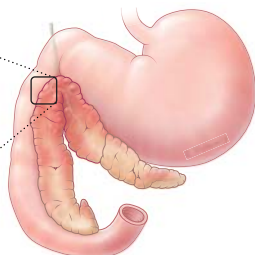
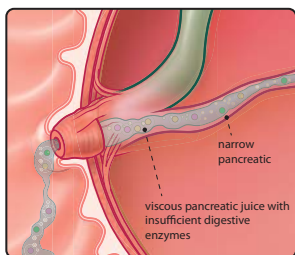
In some cases, pancreatitis is not caused by an obstruction of the pancreas but by a disease or a genetic abnormality. The pancreas is then chronically inflamed.

Pancreatitis results in an enlargement of the pancreas and can cause increased pressure on the pancreatic duct. The inflammation can also cause a thickening of the pancreatic juices. The narrowing of pancreatic duct and thickened

pancreatic juices can make it difficult to transport the digestive juices to the duodenum. In addition, the inflamed tissue of the pancreas can not always produce enough digestive enzymes. A chronic inflammation can eventually lead to the death of the cells that produce the digestive enzymes.



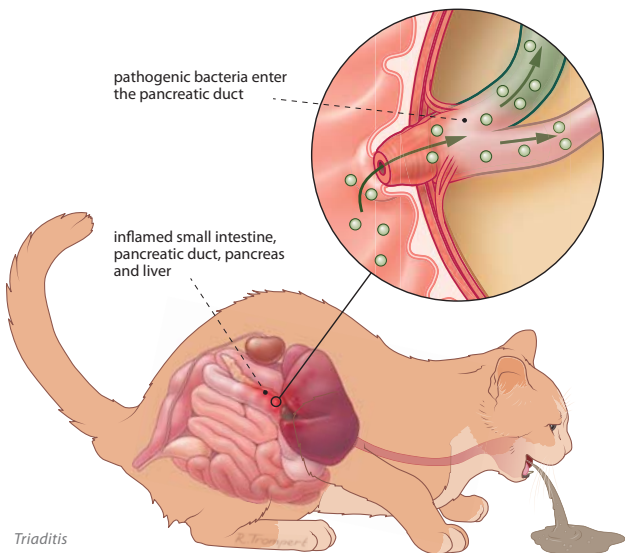
Healthy situation



Unhealthy situation

Triaditis

In cats, pancreatitis is often part of the disease triaditis. This is a condition that only occurs in cats. In this disease, the pancreas, bile ducts and small intestine are simultaneously inflamed. Sometimes the liver can also be inflamed. Often an infection in the small intestine is the underlying cause. During vomiting, there is an increased chance of pathogenic bacteria from the small intestine ending up in the pancreas and bile ducts. These organs can then get infected, together with the pancreas.



Exocrine pancreas insufficiency

The pancreas can be seriously damaged due to a genetic disorder or a disease. Sometimes in such a way that it is no longer able to produce the amount of enzymes to sufficiently digest food. When the pancreas produces an insufficient amount of digestive enzymes, one speaks of exocrine pancreatic insufficiency (EPI).

A part of the digestion can be taken over by other organs. However, fat digestion is almost entirely dependent of enzymes produced by the pancreas. The most prominent symptom of EPI in dogs and cats is yellowish, fatty, strong smelling faeces. In this case, more than 90% of pancreatic function has been lost.

Animals with EPI often have a very good appetite, but are nonetheless skinny and have a bad coat. Exocrine pancreas insufficiency is a very common condition in the German shepherd.



Symptoms of exocrine pancreas insufficiency:

- > Reduced appetite
- > Vomiting
- > Yellow, fatty, foul smelling diarrhoea
- > Weight loss
- > Dehydration
- > Painful abdominal area
- > Fever
- > Lethargy

Treatment and the role of a dietary supplement

The treatment depends on the severity of the complaints and of the cause. In acute pancreatitis, for example, the obstruction of the pancreatic duct needs to be removed. In all cases, the dog or cat has to be stabilised. First of all, it is important to treat the symptoms. Pancreas problems cause a lot of pain, so the veterinarian will prescribe pain relieving medicine. Antiemetics are given to stop the vomiting. An infusion is often used to compensate for the fluid loss, caused by vomiting and diarrhoea. Due to the pain, many animals stop eating. Especially in cats this can cause liver problems. Recovery food can help the recovery of the animal.

Once the dog or cat has been stabilised, they are allowed to go home. A low-fat diet is often prescribed to EPI and pancreatitis patients. This is ideal for dogs and cats with pancreatic problems that do not receive food, supplemented with pancreatic enzymes. In some cases, a low-fat diet is not sufficient and the pancreas needs extra help. A dietary supplement with digestive enzymes can then be a valuable addition to the treatment.

TROVET Digestion Support | PES

Digestion Support is a dietary supplement that contains lipase, amylase and protease, to benefit the digestion of fat, carbohydrates and proteins to compensate for poor digestion in pancreatic diseases, such as acute and chronic pancreatitis and EPI.

Use of Digestion Support ensures improved digestion and absorption of proteins. This results in a reduction in the production of harmful by-products. This can prevent secondary intestinal problems.

Digestion Support is highly concentrated, resulting in a relatively low dosage requirement per meal.

The dietary supplement is hypoallergenic and suitable to be combined with a hypoallergenic diet in the case of food hypersensitivity. The enzymes in this product are of natural origin.



Note:

To prevent dust formation, TROVET Digestion Support should be mixed with wet food or with soaked dry food.

TROVET Digestion Support | PES is a dietary supplement that, after consultation with your veterinarian, can be used for life. Digestion Support is exclusively available via the veterinary practice. For more detailed product information, see: www.trovet.com.

TROVET Digestion Support | PES is available as powder in a resealable jar of 200g.

reliable and affordable dietary pet food



TROVET

De Vergert 4 - 6681 LE Bommel - The Netherlands

T: +31 (0)481-470240 | E: info@trovet.nl | W: trovet.com