

Elimination and hypoallergenic diets for the targeted tackling of food hypersensitivity in dogs and cats



*My dog or cat may have
food hypersensitivity... what do I do now?*



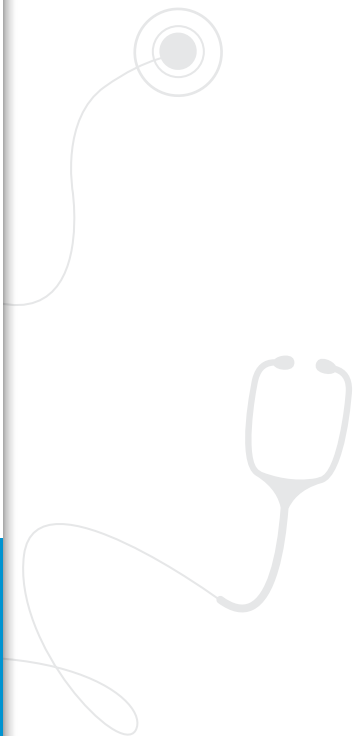
Veterinary exclusive



reliable and affordable dietary pet food



Veterinary exclusive



The veterinarian has diagnosed that your dogs or cat may have food hypersensitivity. To assess this, a proper diet plan for your pet is very important.

In this brochure you will find more information about food hypersensitivity, the symptoms and the roll that TROVET food can play in the diagnosis and tackling of this problem.

Index

What is food hypersensitivity?.....	4
Symptoms of food hypersensitivity.....	5
The assessment of food hypersensitivity: phase 1, the elimination diet	6
Self-prepared diets	6
The elimination period.....	6
TROVET elimination dietary food: Unique Protein	7
Use of Unique Protein.....	8
The storage advice of Unique Protein.....	10
TROVET Balance VMS	11
The follow-up: phase 2, hypoallergenic dietary food.....	12
TROVET Intestinal DPD, for dogs.....	14
TROVET Intestinal FRD, for cats	15
TROVET Hypoallergenic (Insect) IPD / IRD.....	15
TROVET Exclusion NVD, for dogs	16
TROVET Regulator ΩHD, for dogs.....	16
TROVET Treats.....	17

When a dog or cat is suffering from skin and/or gastrointestinal problems, several conditions can be the cause. The veterinarian first has to exclude as many causes as possible, before assessing a possible hypersensitivity in the dog or cat.

What is food hypersensitivity?

We speak of food hypersensitivity when certain food ingredients are not tolerated by the body. Food hypersensitivity can be divided into food allergy and food intolerance.

The most important difference between food allergy and food intolerance is the involvement of the immune system. In animals with food allergy, substances in the diet are seen as foreign to the body and will initiate an immune response to render these substances 'harmless'.

In food intolerance, a reaction to a substance in the food also takes place. However, this is done without direct involvement of the immune system.

While there are theoretical distinctions, in practice it often is not possible to easily determine whether food allergy or food intolerance is the case, because both variants are able to cause similar symptoms. An important distinction is the fact that in food allergy there is an adverse reaction against proteins in the diet. In food intolerance each dietary component can be the possible cause. In case of food allergy, only small amounts of allergy-inducing substances are needed for the induction of an allergic response. Intolerance symptoms often occur when exposed to larger quantities.

Food hypersensitivity is a collective term for the adverse reactions that are caused by food ingredients.

Symptoms of food hypersensitivity

The most common adverse reactions in food hypersensitive animals are pruritus, vomiting and diarrhoea. Solely an ear inflammation or a combination of skin and intestinal problems are also symptoms regularly seen in animals with food hypersensitivity.

Possible symptoms of food hypersensitivity:

- > Vomiting
- > Diarrhoea or flatulence
- > Pruritus, loss of hairs and/or flaky skin
- > Inflamed, red skin
- > Chronic ear problems
- > Growth retardation in young animals
- > Coughing, difficulty breathing, excessive sneezing



The assessment of food hypersensitivity:

phase 1, the elimination diet

The assessment of food hypersensitivity is done by using a so-called elimination diet. This is a diet based on just one carbohydrate source (such as boiled white rice or potato) and one (animal) protein source, which are not used in regular pet food. Examples of protein sources are: ostrich, horse, quail, venison and rabbit. The purpose of an elimination diet is to assess if your dog or cat truly has food hypersensitivity. The symptoms of food allergy overlap with symptoms of other diseases, like flea allergy or grass pollen allergy. An elimination diet also makes it possible to assess which dietary component causes the adverse reaction and can help to keep your dog or cat free of symptoms.

Self-prepared diets

When providing an elimination diet, the preference goes to a self-prepared diet. When preparing the diet yourself, you know exactly what you are feeding your dog or cat. Self-prepared diets are completely free of preservatives and colour, odour and palatability enhancers, which may cause a hypersensitivity reaction. The absence of these substances increases the chance of success.

The elimination period

The feeding of an elimination diet, to assess if your dog or cat truly has food hypersensitivity, takes six to eight weeks. The period is this long, because it takes up to a few weeks for the symptoms to disappear. Some symptoms, such as intestinal problems, can disappear within a few days.

Always feed an elimination diet after prescription of your veterinarian. It is important to avoid feeding your dog or cat anything else, besides the elimination diet, during the elimination period. This means that your pet should not get any snacks or table scraps. It is also important that your cat is

not able to ear outside or that your dog is able to eat waste or faeces off the street.



The tackling of potential food hypersensitivity in dogs and cats is a process that TROVET made easier for you. TROVET can rightfully be named a specialist in this field, due to the unique and wide range of elimination diets and hypoallergenic dietary foods.

TROVET elimination dietary food: Unique Protein

'First aid for animals with food hypersensitivity'

Self preparing food for your dog or cat can be a daunting task. Usually the specific animal protein, the veterinarian prescribes, is difficult to obtain. The preparation of the food may be time consuming. Time is precious, leading to the self preparation of the diet to not always be ideal. In addition, some types of meat have an unpleasant smell during preparation. To aid with the self preparation of a diet, TROVET has developed a special product range: Unique Protein.

Unique Protein is wet food, consisting of pure meat, supplemented with olive oil and sunflower oil. These products are available in unique variants: lamb, rabbit, venison, turkey, quail and horse. Unique Protein is guaranteed to be free of added carbohydrates, antioxidants and colour, flavour, and palatability enhancers.

It is a ready-made product. To create an elimination diet you only need to add a carbohydrate source. The preferred carbohydrate sources are boiled white rice or potato. In addition, you should add a dietary supplement to prevent any vitamin and mineral deficiencies: TROVET Balance.

Use of Unique Protein

When the veterinarian has determined which Unique Protein variant is most suited for your dog or cat and which carbohydrate source can be used, the elimination period can start. Keep in mind that the feeding advice on the packaging is per kilogram of bodyweight.



The benefits of Unique Protein:

- > **Reliable**
Pure meat, without additives
- > **Unique protein source**
Each product is based on one unique animal protein
- > **Extensive**
Choice between six protein sources
- > **Ease**
Time saving and prevent unpleasant odours in the house
- > **Palatable**
Unique Protein is very palatable for dogs and cats



The feeding advice per kilogram bodyweight for dogs heavier than ten kilogram is lower than the feeding advice for dogs lighter than ten kilogram. Is this correct?

Yes, this is correct. For maintaining a constant body temperature, energy is needed. The body temperature of your dog or cat is usually higher than the environmental temperature, resulting in a constant loss of body heat. It costs energy, in the form of food, to keep the body temperature at a constant level. This also explains why dogs and cats eat less on a warm day.

A small Chihuahua loses relatively more body heat than a Newfoundland dog. This is because a small dog has a greater 'skin surface to body volume ratio' than a larger dog. So, to maintain a constant body temperature, the small dog needs relatively more food than the large dog.

The storage advice of Unique Protein

Unique Protein is available in three different packaging sizes. Aluminium cups of 100 and 300 gram and sausages of 800 gram. Store unopened packages in a dark place, at room temperature. When the packaging has been opened, the product can be stored in the refrigerator up till two days. It is also possible to divide the Unique Protein in daily portions and put these in the freezer. It is not advised to freeze it in the original packaging, due to expansion of the product.

Note: the Unique Protein products in the different packaging sizes have the same composition, but have a slightly different structure.

TROVET Balance | VMS

A self-prepared elimination diet is not balanced and can lead to nutritional deficiencies when given for a longer time. These deficiencies can sometimes already be seen after three weeks. For critically ill animals, growing animals, animals in the final stage of pregnancy and lactating animals a vitamin and mineral mix should be added immediately from the start of the elimination phase.



Balance | VMS is the ideal complement for self-prepared and non-adequate nutrition and can be given temporarily (during the elimination phase), but also for life (as an addition to a self-prepared diet). Balance is formulated to be hypoallergenic, has a neutral flavour and is easy to dose.

What if the symptoms do not disappear when feeding an elimination diet?

It is possible that the symptoms do not disappear when feeding an elimination diet. This can have multiple causes. Something, other than the food, may be the cause of the adverse reaction. The source of these causes can be present in the environment, like fleas, mites and pollen. It is also possible that your dog or cat had access to other food. One of the family members might have given a bowl of the previous food of your dog or cat. It is also possible that your cat has been able to eat the food of a neighbour cat. So it is important to be sure that, during the elimination period, your dog or cat did not receive anything besides the elimination diet. If this is the case, then it is very unlikely that food hypersensitivity is the cause of the adverse reaction and the veterinarian will continue to search for an answer.

The follow-up:

phase 2, hypoallergenic dietary food

If, during the elimination phase, it is determined that your pet is hypersensitive to a particular food ingredient, the next step is finding a diet that keeps your pet free of symptoms. TROVET has developed hypoallergenic diets specifically for this purpose. Ingredients that may cause an allergic reaction are kept to a minimum in hypoallergenic diets. All TROVET hypoallergenic diets are based on a single (animal) protein source and a single carbohydrate source and contain all the essential nutrients in optimal amounts. The addition of a vitamin and mineral mix is not necessary. All of the TROVET hypoallergenic dietary food variants can be given for life.

TROVET hypoallergenic diets prevent immunological reactions (food allergy) or non-immunological reactions (food intolerance) in the form of skin and/or gastrointestinal problems, such as diarrhoea and vomiting. When switching from Unique Protein to a TROVET hypoallergenic diet, you will continue to support your dog or cat, by reducing the severity or preventing the reoccurrence of hypersensitivity reactions. TROVET hypoallergenic food is also suited as a direct replacement of the food that is causing the adverse reactions in your pet.

For each elimination diet TROVET has developed a hypoallergenic diet that can be used as a follow-up.



Hypoallergenic (Horse) | HPD
for dogs, based on horse and potato

Dry: 3 kg, 10 kg
Wet: 400g



Hypoallergenic (Horse) | HRD
for cats, based on horse and rice

Wet: 200g

 **Hypoallergenic (Lamb) | LRD** for dogs, based on lamb and rice Dry: 3 kg, 12.5 kg
Wet: 400g


 **Hypoallergenic (Lamb) | LRD** for cats, based on lamb and rice Dry: 500g, 3 kg
Wet: 200g


 **Hypoallergenic (Quail) | QPD** for dogs, based on quail and potato Wet: 400g


 **Hypoallergenic (Quail) | QRD** for cats, based on quail and rice Wet: 200g


 **Hypoallergenic (Rabbit) | RRD** for dogs, based on rabbit and rice Dry: 3 kg, 12.5 kg
Wet: 400g

 **Hypoallergenic (Rabbit) | RRD** for cats, based on rabbit and rice Dry: 500g, 3 kg
Wet: 200g

 **Hypoallergenic (Turkey) | TPD** for dogs, based on turkey and potato Wet: 400g

 **Hypoallergenic (Turkey) | TRD** for cats, based on turkey and rice Wet: 85g

 **Hypoallergenic (Venison) | VPD** for dogs, based on venison and potato Dry: 3 kg, 10 kg
Wet: 400g

 **Hypoallergenic (Venison) | VRD** for cats, based on venison and rice Wet: 200g

Even though the diets below do not directly correlate with a Unique Protein elimination diet, they are perfectly suitable to be used as a hypoallergenic diet.



Hypoallergenic (Ostrich) | OPD
for dogs, based on, ostrich, pea and potato

Dry: 3 kg, 12.5 kg

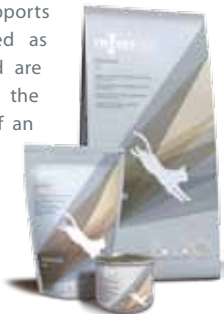
TROVET Intestinal | DPD

Intestinal is a special dietary food for dogs that supports the gastrointestinal tract and can also be used as hypoallergenic food. Duck is the only animal protein source in this food. The carbohydrate source is potato. The employability of Intestinal in gastrointestinal problems will be further discussed in the brochure 'My dog or cat has problems with the stomach, intestines or liver... what do I do now?'




TROVET Intestinal | FRD, for cats

Intestinal is a special dietary food that supports the gastrointestinal tract and can also be used as hypoallergenic food. The ingredients of the food are kept to a minimum, to minimise the burden on the gastrointestinal tract and to reduce the chance of an allergic reaction. Intestinal dry food contains hydrolysed fish protein as the only animal protein source. Intestinal wet food contains salmon as the only animal protein source. The carbohydrate source is rice. The added fatty acids are able to downregulate inflammatory reactions, which is desirable in cats with an intestinal inflammation or atopy.

The employability of Intestinal in cats with gastrointestinal problems is further explained in the brochure 'My dog or cat has problems with the stomach, intestines or liver... what do I do now?'.


TROVET Hypoallergenic (Insect) | IPD / IRD

Hypoallergenic (Insect) is a specially formulated, complete hypoallergenic dietary food for dogs with symptoms of food hypersensitivity. Hypoallergenic (Insect) is based on one unique animal protein source (Black Soldier Fly larvae) and one carbohydrate source (dogs: potato, cats: rice). Insects belong to the invertebrates. An allergic cross-reaction between protein from vertebrates and invertebrates is not possible. The insects used in this product are a sustainable protein source.


TROVET Exclusion | NVD, for dogs

Exclusion is a specially formulated, complete hypoallergenic dietary food for dogs with food hypersensitivity. Research has shown that animal proteins are the main cause of food hypersensitivity reactions. Exclusion is a vegetarian diet, based solely on vegetable raw materials. This makes Exclusion unique and ideal for dogs with a proven hypersensitivity to animal proteins. All the required nutrients are present in this food. Because this diet is free of animal protein, it can also be used for dogs that have urate or cystine urolithiasis.

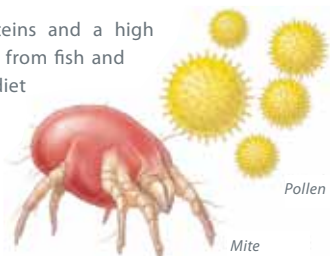


TROVET Regulator | ΩHD, for dogs

Regulator is a multifunctional hypoallergenic dietary food for dogs. The proteins in Regulator are hydrolysed. This means that the proteins in this diet are made smaller, in such a way that they are less likely to be recognised by the immune system as foreign. This significantly reduces the chances of an allergic reaction. Next to this, Regulator is high in the omega 3 fatty acids EPA and DHA and the omega 6 fatty acid GLA. These fatty acids are known to have anti-inflammatory properties. Research has shown that these fatty acids are able to reduce the symptoms of pruritus and inflammations in allergic dogs.



The combination of hydrolysed proteins and a high content of omega 3 and 6 fatty acids, from fish and borage oil, makes Regulator an ideal diet for dogs with food hypersensitivity as well as dogs that are allergic to environmental substances, like grass pollen, fleas or mites.



TROVET Treats

TROVET has an extensive range of responsible rewards, also known as treats. Most treats are suitable for both healthy dogs and cats, as well as dogs and cats with a special dietary requirement or prescription diet. The TROVET treats are cookies in different shapes and are an ideal reward that can be used during training, after a walk or just as a snack.

The special thing about TROVET treats is that, besides the taste, they are formulated in such a way that they fit well with various diets. Giving 'regular' treats to dogs or cats that get dietary food, can negatively affect the efficacy of these foods. Therefore, carefully choose a treat that fits the situation of your dog or cat. Always ask your veterinarian for more information and advice. TROVET treats are available exclusively via your veterinarian.

For pet owners, there is a more detailed treat brochure 'I want to give my dog or cat something extra besides dietary food... what do I do now?'. You can find these at your veterinary practice or at www.trovet.com.

Treats suited in case of food hypersensitivity

In the provision of a treat to a dog or cat with food hypersensitivity, it is important that the animal is not hypersensitive for one or more of the ingredients in the treat. When these ingredients are avoided, all remaining treats may be provided.





reliable and affordable dietary pet food

For the complete range of TROVET products, visit: www.trovvet.com



Veterinary exclusive

reliable and affordable dietary pet food



TROVET

De Vergert 4 - 6681 LE Bommel - The Netherlands

T: +31 (0)481-470240 | E: info@trovet.nl | W: trovet.com